

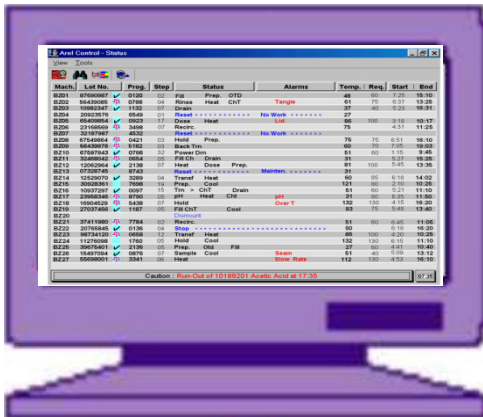


# MMC 1 Multi Machine Control

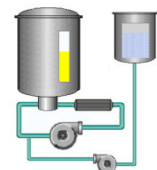
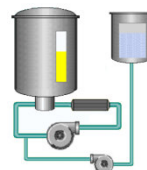
## One PC for Entire Laboratory Control

AREL M.M.C.-1 is a package of software and Inputs/Outputs boards that enable to control multiple machines directly from a central standard PC, saving the cost of individual machine controllers

AREL M.M.C.-1 is an ideal solution for control of multi tier laboratory machines and simple production machines



AreI input/output modules

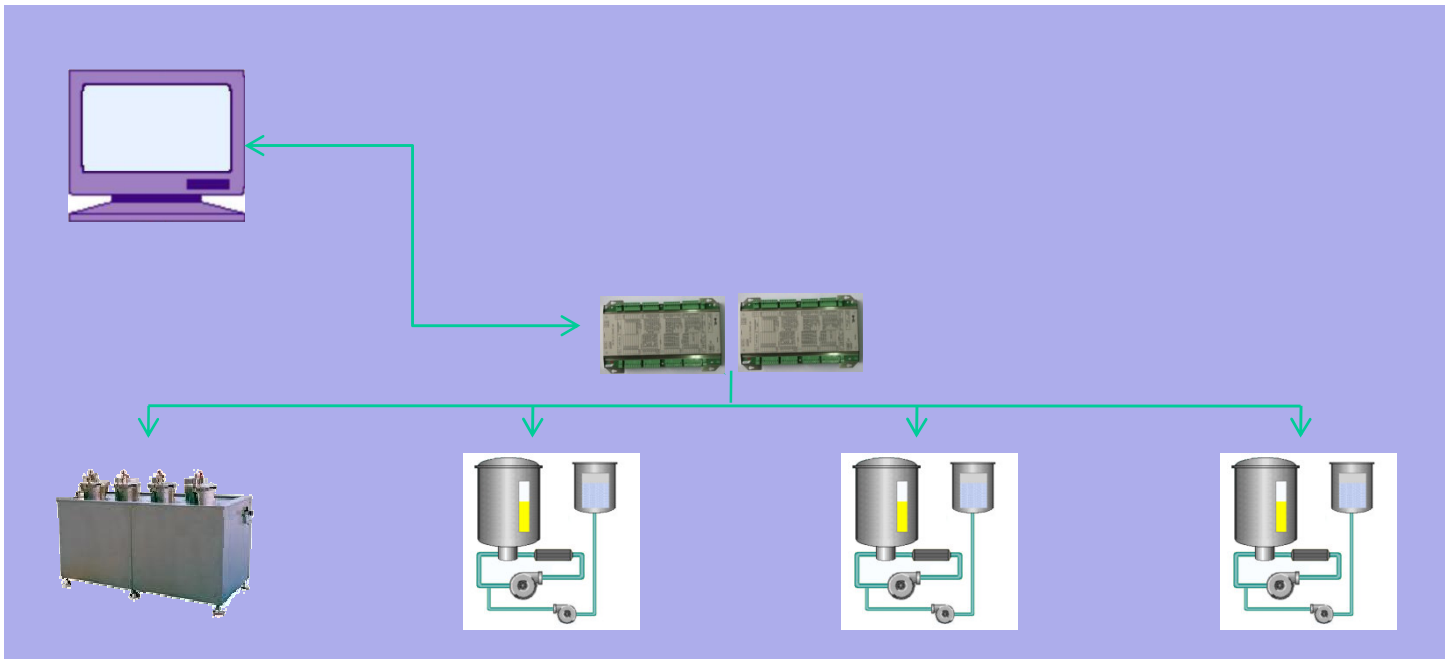


**AREL MMC 1** One PC for total laboratory and sample dyeing operation

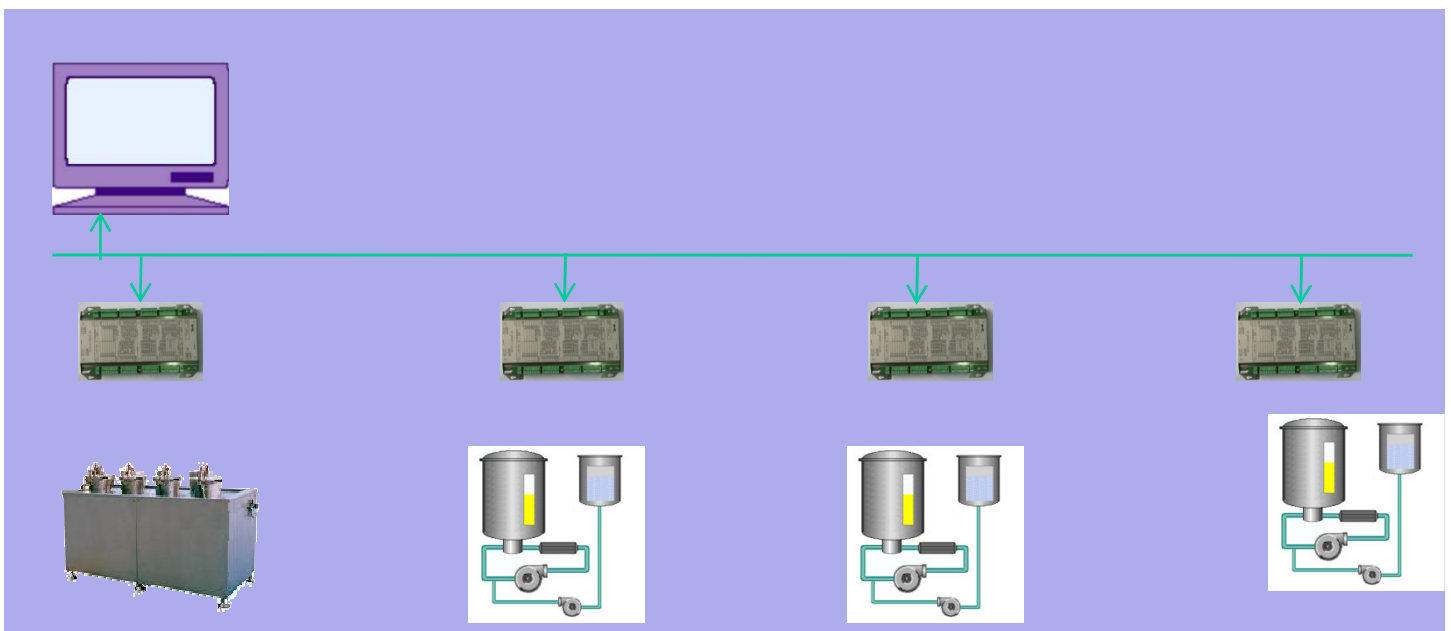
**AREL MMC 1** The power of central system for each dyeing machines, at a fraction of the price of individual machine controller, and central system

**AREL MMC 1** For any dyeing machine with the most sophisticated functions , however sophisticated machine limits the total possible number of controlled machines

**AREL MMC 1** The adaptation to the dyeing machine is done by menu driven dialogue and soft PLC. Each operated machine can execute full multi tasking operation.



Installation with central I/O modules



Installation with I/O modules assigned to each machine

# Unlimited Control

Unlimited number of dye programs, any length

Graphic editing of dye programs

Synchronization of parallel functions for shorter dye cycles

Full multi tasking operation of parallel function

Formula by rules - any parameter of the dye program can be calculated automatically to fit to the batch, to the recipe and to the machine characteristics

Past-Present-Future display of the dyeing process

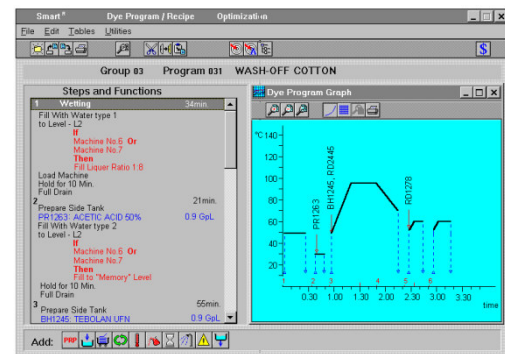
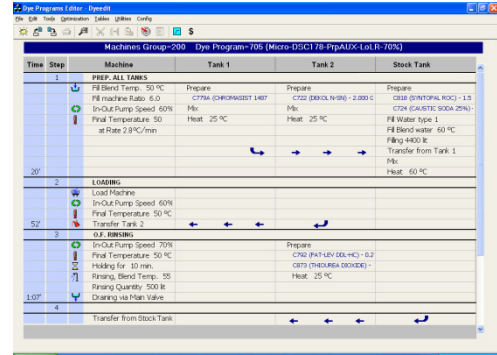
Unique historical reports. Zooming from total plant data into each individual event according to desired classification

Manual activation of predefined functions

Intuitive very simple operation

Multi language support

Web and email interfacing, for data transfer and for remote analysis and support



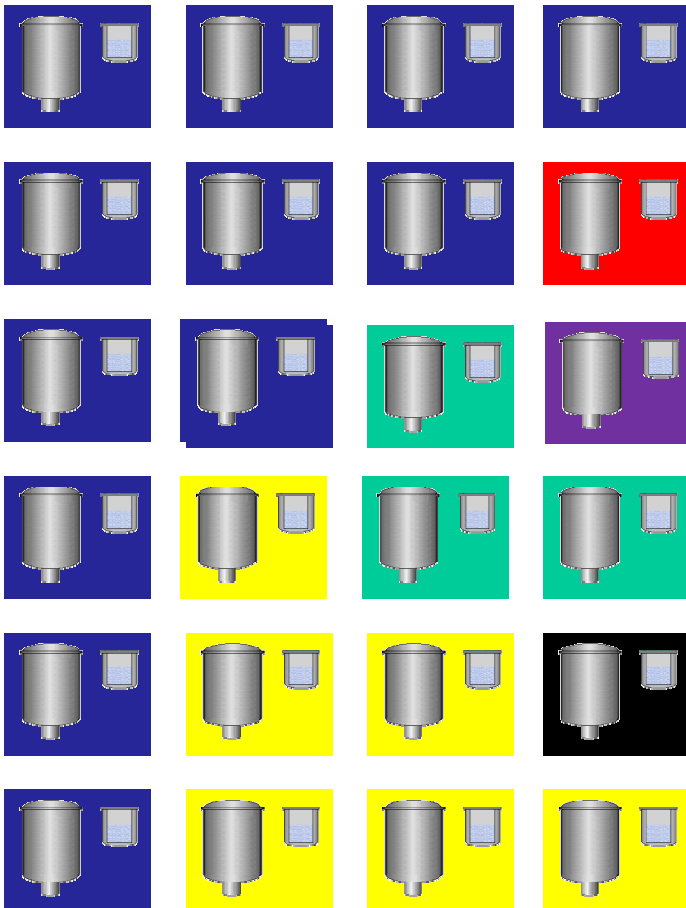
# Multi Kier Control

6x1

3x2

2x3

1x6



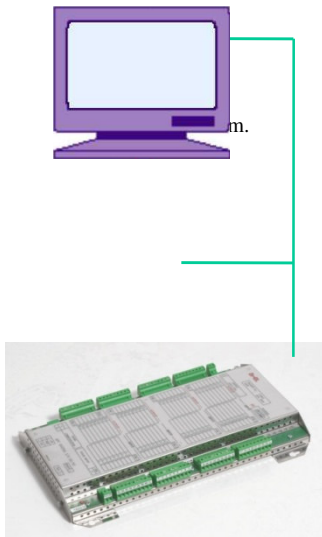
When operating multi kier machine the operator set the PC to fit the desired coupling configuration like individual operation of each kier pairs operation Etc.

Machine	Lot No.	Prog. Step	Status	Alarms	Temp. Req.	Start	End
1	Combi 1	7089280	7537	2	Fill Hot Level2	Fill	41 2 7:32 11:11
2	Combi 2	7089280	7237	4	Dosing		55 7:50 12:12
3	Combi 3	7089280	7237	4	Dosing		55 7:50 12:12
4	Combi 4	7089280	7237	4	Dosing		55 7:50 12:12
5	Combi 5	7089117	7001	23	Drain		39 8:03 13:23
6	Combi 6	7089280	7237	4	Dosing		55 7:50 12:12
7	Diamond 11	70781272	5027	70	Hold	Tang	82 6:12 13:47
8	Diamond 12	70799858	7253	18	Rinse	...	41 7:20 7:20
9	Diamond 13	70798729	7253	18	Rinse	...	41 8:48 12:05
10	Diamond 14	70892206	7253	18	Rinse	...	41 7:59 7:59

# Input Output Modules

APC I/O boards are serially connected to the controller and can be located close or at a distance from the controller. The boards are packed in s.s. steel housing with clear legend for ease of wiring and maintenance. There is no practical limitation on the number of I/O boards that can be connected to the controller.

The Inputs and Outputs modules can be assigned to specific machines, or can share group machines for more economic I/O utilization



## Range of I/O boards modules to fit economically any set of machines

Configuration	Analog			Digital	
	Inputs		Outputs	Inputs	Outputs
	0-20 mA or 4-20 mA	PT100	4-20 mA Or 0-10V	Opto-Isolated	Relay 1A 24V
24/40				24	40
32/32				32	32
8/6/8	8	6	*8		
4/4/16/24	2	2	4	16	24

\*4-20 mA only

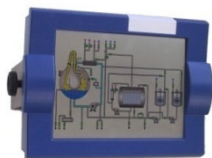
# Arel Solutions for the Textile Wet Processing Industry

## Controllers

Standard PC



**T605** PC based 15" touch screen



**APC** PC based 8.4" screen with keyboard



**S80** PC based 6.4" screen with keyboard



**Series 300** microprocessors controller



## Systems

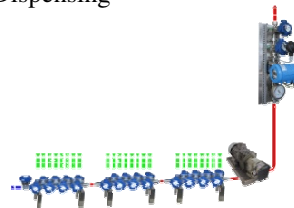
Integrated Batch Dye House



Continuous Ranges



Chemicals and Salt Dispensing



Dissolving and Delivery Systems



# Arel Tradition of Innovation Since 1971

AREL CONTROL ( 1971 ) LTD

P.O.Box 172 Industrial Zone

Yavne 81101, Israel

E Mail: [post@arel-control.com](mailto:post@arel-control.com)

[www.arel.com](http://www.arel.com)

AREL ASIA PACIFIC (PTY) LTD

16/56 Church Avenue, Mascot

Sydney 2020, Australia

E Mail: [sales@arel.com](mailto:sales@arel.com)